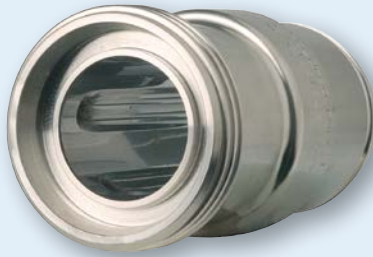


In-line chemical seals RD 50/51/60 for hygienic processes



- For dairy fitting DIN 11851 and clamp connection ISO 2852
- No T piece required in pipe
- Easy, fast installation in pipe



2

Application For use with Bourdon tube pressure gauges, pressure transducers or pressure switches. For flowing, corrosive and highly viscous media; designed for direct installation in pipes. Typical application areas:

- Biochemical applications
- Food and beverages industry
- Beverages industry
- Pharmaceutical industry

Technical specifications

Process connection

RD 50: DIN 11851, 316 L, male thread DN 15 to DN 80,
RD 51: SMS 1147 1" to 3"
RD 60: Clamp ISO 2852, 316 L 1" to 3"

Diaphragm

Stainless steel 316 L, no dead space, welded to body

Instrument connection

Stainless steel 316 L
Welded connection

Pressure transmission liquid

Paraffin oil (FM 09), FDA-listed

Pressure ranges

See price list section

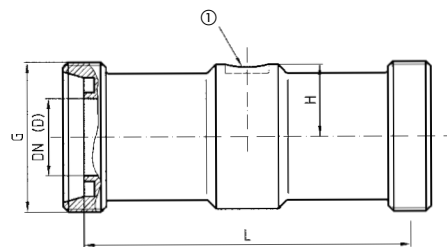
Nominal pressure

See table of measurements

Options

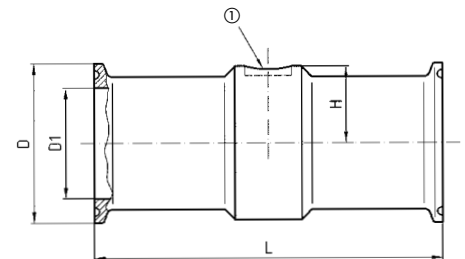
- Cooling element (> 100 °C)
- Capillary tube

Type RD 50 DIN 11851/DIN 11887



① Welded connection Ø 10 for instrument

Type RD 60 Clamp ISO 2852



① Welded connection Ø 10 for instrument

DN	PN	G	L	D	H
15	40	Rd34x1/8"	240	16	20
25	40	Rd52x1/6"	110	26	24
32	40	Rd58x1/6"	110	32	29
40	40	Rd65x1/6"	110	38	31.5
50	25	Rd78x1/6"	110	50	37
65	25	Rd95x1/6"	110	66	45
80	25	Rd110x1/4"	60	81	51.5

DN	PN	D	D1	L	H
1"	16	50.5	22.2	110	24
1½"	16	50.5	34.8	110	31.5
2"	16	64	47.8	110	37
2½"	16	77.5	60.3	110	45
3"	10	91	72.9	60	51.5

i

See page 189 for prices.